



Deer Lodge Health Centre (DLHC)  
 Golden West Centennial Lodge (GWCL)  
 Middlechurch Home (MCH)  
 River Park Gardens (RPG)  
 Organizational Structure  
 December 2024

**WRHA Lead, Health Services - Community and Continuing Care**  
 Tara Lee Procter

**Administrative Coordinator/  
 Client Relations**  
 Tannis Pratt

**Chief Operating Officer  
 DLHC / GWCL / MCH / RPG**  
 Arle Jones

**DLHC Foundation**  
**Organization Liaison**  
 Veterans Affairs Canada  
 Palliative MB  
 WRHA Nutrition & Food Services  
 WRHA Health Information Services  
 U of M Dental  
 Shared Health Digital Services  
 St. James/Assiniboia 55+ Club

**Lead, Facilities and Support Services**  
 Nyerhovwo Leslie Ekrebe

**Executive Director Clinical Services**  
 Sue Lotocki

**Executive Director Clinical Services**  
 Shelley Demski

**Chief Medical Officer**  
 Dr. Ashley Bhullar

**Director Human Resources**  
 Christina Emond

**Business & Finance Lead**  
 Vacant

**DLHC Manager – Maintenance**  
 Jeffrey McKinlay  
 (eff. Jan 10/25)

**DLHC Manager – Environmental Services/ Security**  
 Dale Braun

**GWCL Manager – Maintenance/ Environmental Services**  
 Barry Doran

**MCH/RPG Manager – Maintenance/ Environmental Services**  
 Rob Duguay

**Services**  
 Emergency Preparedness

**Organization Liaison**  
 Capital Planning - Safety and Security  
 Regional Laundry

**GWCL Director Health Services –**  
 Nancy Hovmand

**DLHC Director Health Services – OSI Clinic**  
 Chris Zegalski

**DLHC Manager Health Services**  
 Joline Fousasse

**DLHC Manager Health Services**  
 Diane Schuster

**DLHC Manager Health Services**  
 Ian Aguilar

**DLHC Manager Health Services**  
 Jessica Gladue  
 (eff. Jan 13/25)

**DLHC Manager Health Services**  
 Michelle Cherepak

**DLHC Manager Health Services**  
 Robert McLennan

**DLHC Manager Health Services**  
 Kayla Brown

**DLHC Manager Health Services**  
 Jennifer Chorney

**Organization Liaison**  
 WRHA Pharmacy Medisystems - GWCL  
 WRHA Care Coordination  
 Shared Health Radiology Services

**MCH Director Health Services -**  
 Sandy Peers

**DLHC Manager Health Services**  
 Kerri Bell

**RPG Manager Health Services -**  
 Alison Anderson

**DLHC Manager Health Services**  
 Aric Kam

**DLHC Manager Health Services**  
 Sheena Warkentin

**Facility Patient Care Managers**  
 DLHC

**DLHC Manager Health Services**  
 Amanda Younka

**Clinical Resource Team**

**Quality & Accreditation Consultant**  
 Erin Mudry

**Organization Liaison**  
 WRHA Infection Prevention & Control  
 Medisystems – DLHC, MCH, RPG  
 Shared Health Lab Services  
 Research

Physicians

PA's/CA's

Human Resources

**ESP Administrator**  
 Kristin Cook

Scheduling

**Organization Liaison**  
 Shared Health Human Resources and Occupational Health & Safety  
 WRHA Human Resources

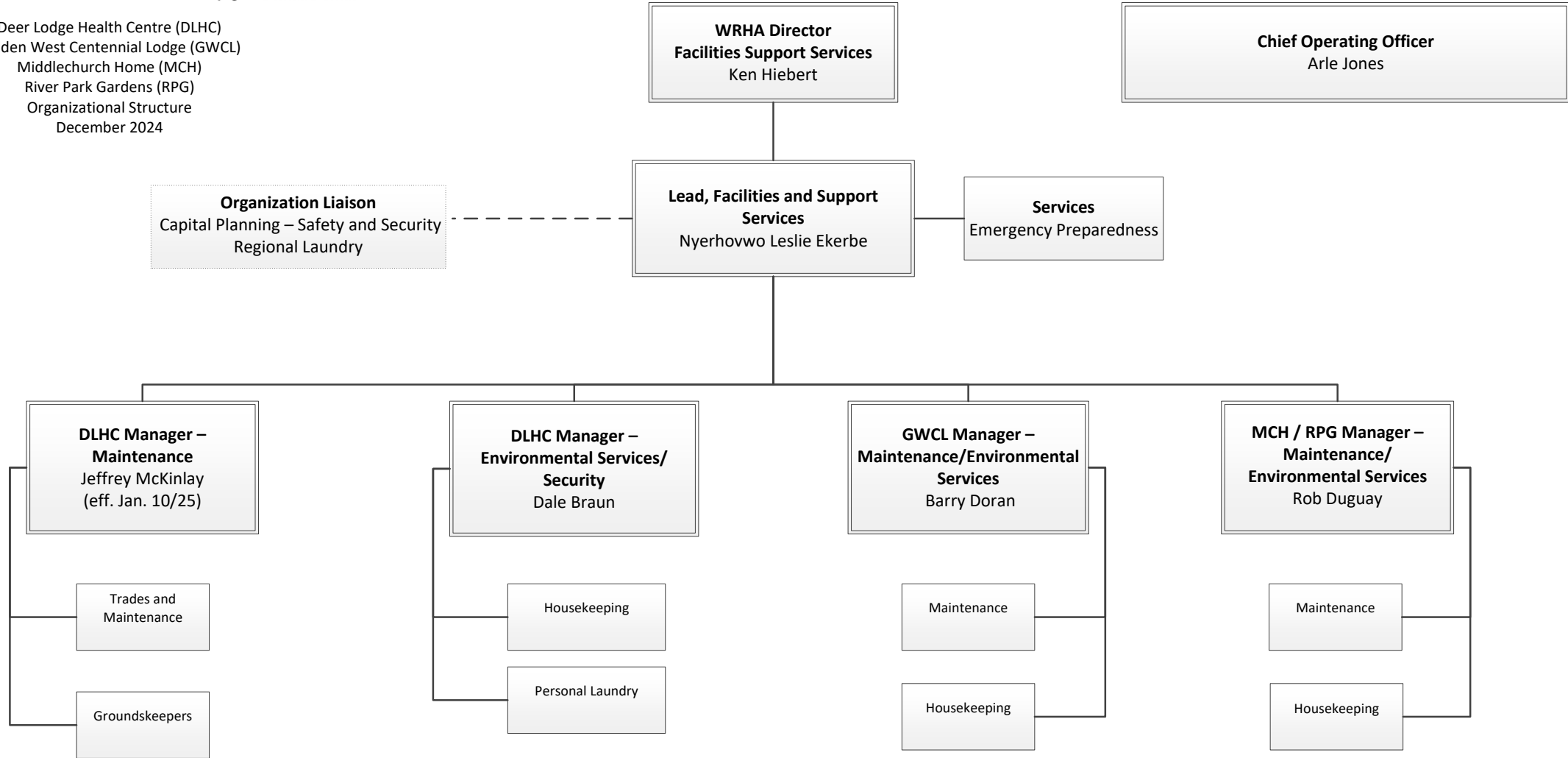
**B&F Operations**

**Services Ancillary Operations**

**Organization Liaison**  
 WHRA Finance  
 Capital Planning – equipment  
 Medical Remuneration  
 Risk Management  
 Shared Health Supply Chain



Deer Lodge Health Centre (DLHC)  
 Golden West Centennial Lodge (GWCL)  
 Middlechurch Home (MCH)  
 River Park Gardens (RPG)  
 Organizational Structure  
 December 2024





Deer Lodge Health Centre (DLHC)  
 Golden West Centennial Lodge (GWCL)  
 Middlechurch Home (MCH)  
 River Park Gardens (RPG)  
 Organizational Structure  
 December 2024

**Chief Operating Officer**  
**DLHC / GWCL / MCH / RPG**  
 Arle Jones

**Executive Director Clinical Services**  
 Sue Lotocki

**Organization Liaison**

- WRHA Pharmacy Medisystems
- WRHA Care Coordination
- Shared Health Radiology Services

**GWCL Director Health Services**  
 Nancy Hovmand

**DLHC Director Health Services –**  
 Chris Zegalski

**GWCL Coordinator Resident Services**  
 Debbie Glatz

**DLHC Manager Health Services**  
 Diane Schuster

**DLHC Manager Health Services**  
 Jessica Gladue  
 Eff. Jan 13/25

**DLHC Manager Health Services**  
 Ian Aguilar

**DLHC Manager Health Services**  
 Robert McLennan

**DLHC Manager Health Services**  
 Jennifer Chorney

**DLHC Manager Health Services**  
 Joline Fouasse

**DLHC Manager Health Services**  
 Michelle Cherepak

**DLHC Manager Health Services**  
 Kayla Brown

Chronic Care  
 Lodge 5

Chronic Care  
 Lodge 6

Chronic Care  
 Lodge 7

Rehabilitation & Assessment  
 Lodge 2W  
 Transitional Care  
 Lodge 2E

Rehabilitation & Assessment  
 Lodge 4

Speech Language Pathology  
 Movement Disorders Clinic  
 Recreation  
 Volunteers

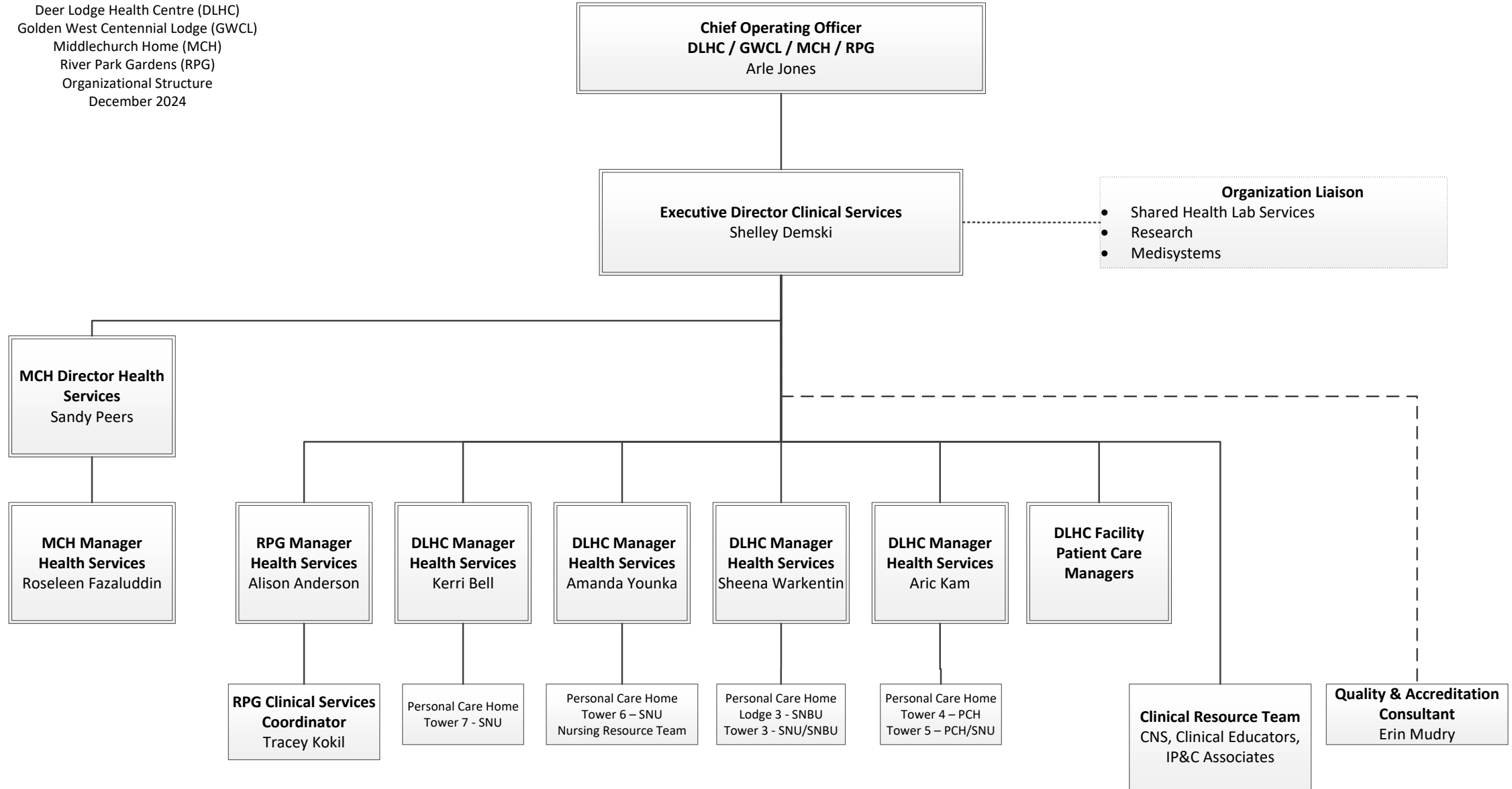
PRIME  
 Social Work  
 Respiratory Therapy  
 Pulmonary Rehab.  
 Spiritual Care

OT / PT  
 Comprehensive Geriatric Assessment Clinic  
 Hospital Based Home Care

Operational Stress Injury Clinic  
 Communication Devices Program

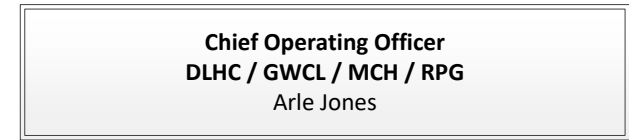
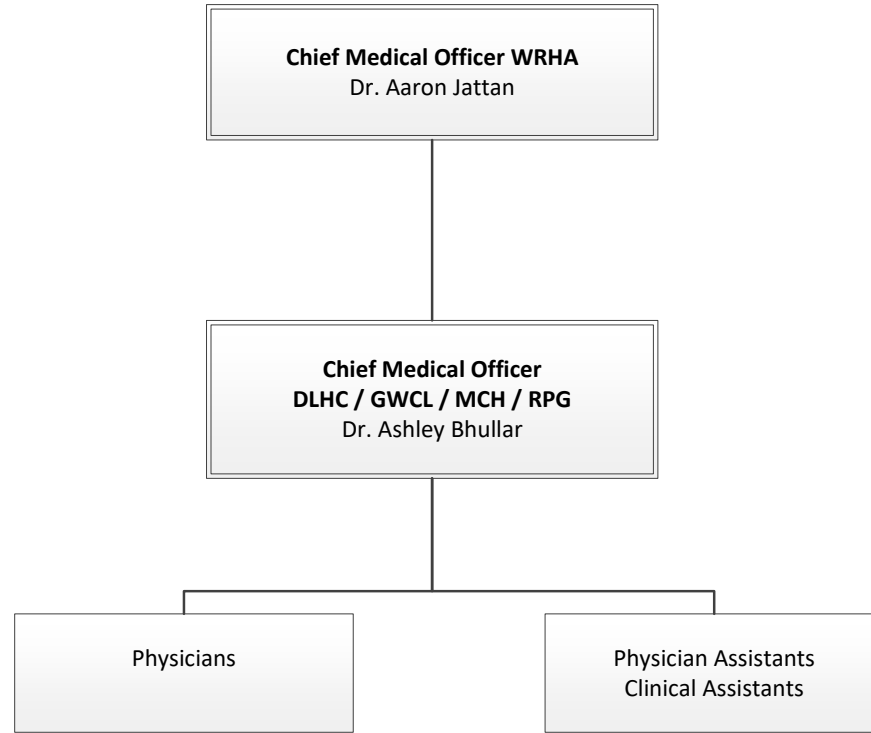


Deer Lodge Health Centre (DLHC)  
 Golden West Centennial Lodge (GWCL)  
 Middlechurch Home (MCH)  
 River Park Gardens (RPG)  
 Organizational Structure  
 December 2024



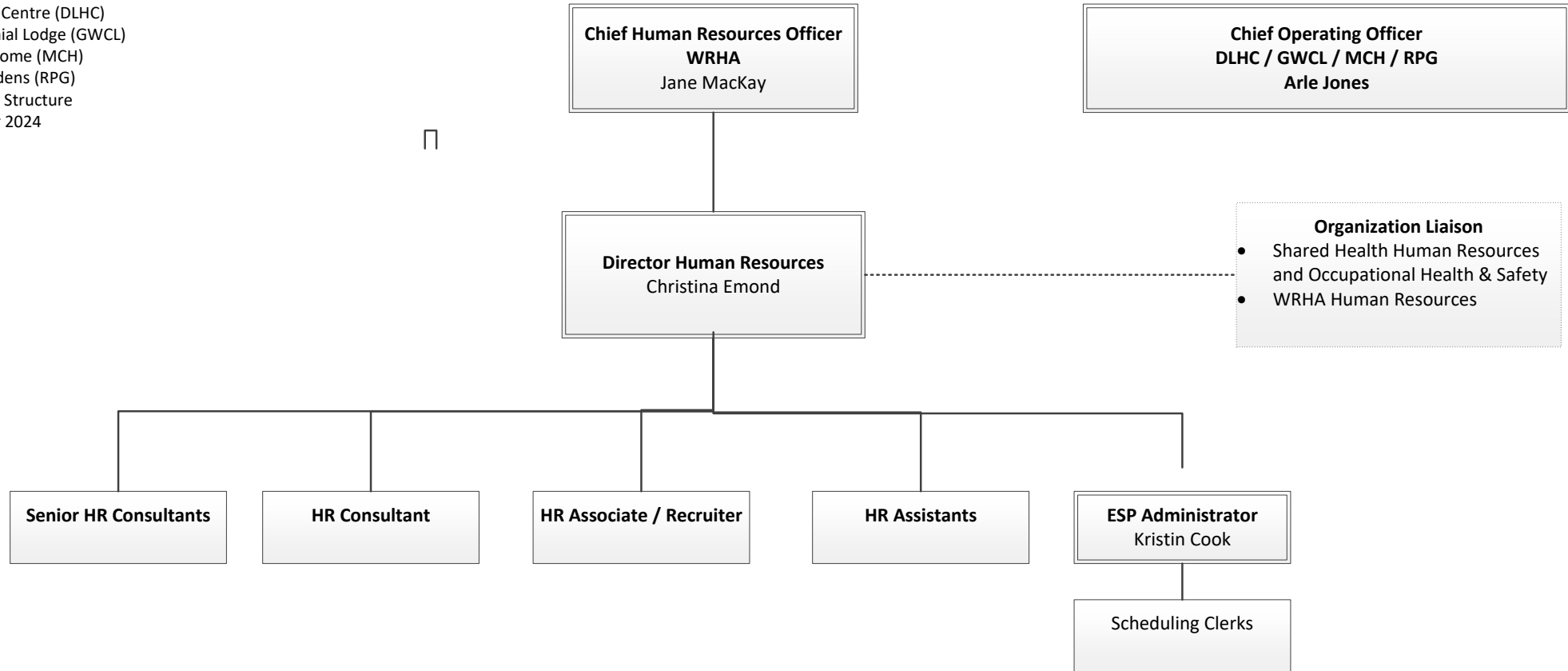


Deer Lodge Health Centre (DLHC)  
 Golden West Centennial Lodge (GWCL)  
 Middlechurch Home (MCH)  
 River Park Gardens (RPG)  
 Organizational Structure  
 December 2024





Deer Lodge Health Centre (DLHC)  
Golden West Centennial Lodge (GWCL)  
Middlechurch Home (MCH)  
River Park Gardens (RPG)  
Organizational Structure  
December 2024





Deer Lodge Health Centre (DLHC)  
 Golden West Centennial Lodge (GWCL)  
 Middlechurch Home (MCH)  
 River Park Gardens (RPG)  
 Organizational Structure  
 December 2024

