

Duodopa (Levodopa/Carbidopa Intestinal Gel)

Pump Use: Evening and Morning Instructions

Evening Instructions

Stop the Infusion

1. Press and hold the STOP/START button for 3 seconds to stop the infusion.
2. STOPPED appears in the display, which means that the pump is not running and is not administering an infusion of DUODOPA.



Turn the Pump OFF

1. Press and hold the ON/OFF button for 3 seconds to turn the pump off.



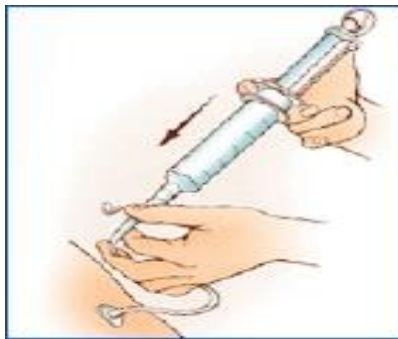
Disconnect the Pump from the PEG-J Tube

1. When disconnecting the PEG-J tube from the pump always hold the PEG-J tube stationary (never twist the PEG-J tube). Disconnect the tube that extends from the cassette .



Perform the “Flush Procedure” Every Day – post completion of DUODOPA therapy

1. After you have completed your DUODOPA therapy for the day it is imperative that you perform a “Flush Procedure.” Flushing your tube is part of your Daily tube care and is outlined within the Daily Tube Care pamphlet that has been provided to you.
2. Use the provided syringe to flush the intestinal tube with at least 40 mL of room temperature drinking water. The port is marked with the letter “I”.
3. Use the provided syringe to flush the space between the intestinal and PEG tube at least once a week with room temperature drinking water. The port is marked with the letter “g”.



Remove the Used Cassette

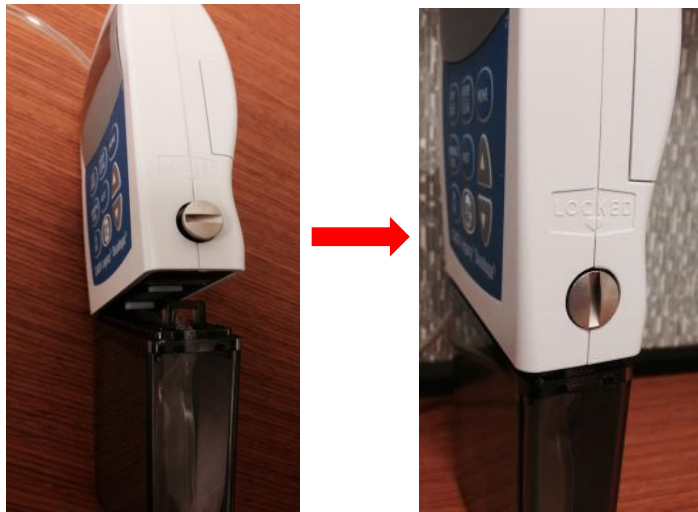
1. Insert a Duodopa key or a coin into the cassette latch, push in and turn clockwise (to the right)
2. The cassette latch will pop out and the Cassette should release



Morning Instructions

Attach the Cassette to the Pump

1. Connect the cassette to the pump by inserting the cassette hooks in to the hinge pins on the pump
2. Place the pump on a firm flat base (like a table)
3. While pressing the two parts together, insert a Duodopa key or a coin into the cassette latch, push in and turn counter-clockwise until the latch lines up with arrow on the side of the pump

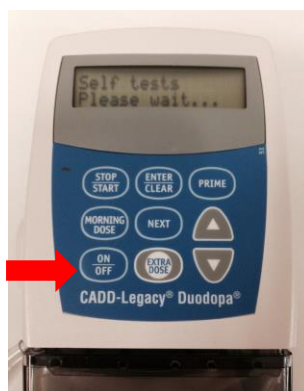


Connect the New Cassette to the PEG-J Tube

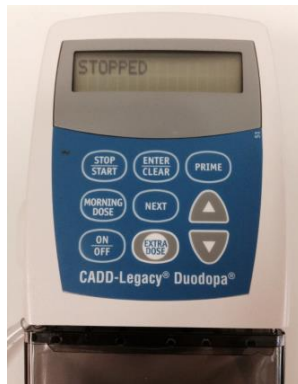
1. Remove the red protective cap from the cassette tube and open any tube clamps
2. Connect the cassette tube to the intestinal port (port marked with "I") on the PEG-J tube
3. Never twist the PEG-J tube always just turn the cassette tube

Turn the Pump On

1. Press the ON/OFF button

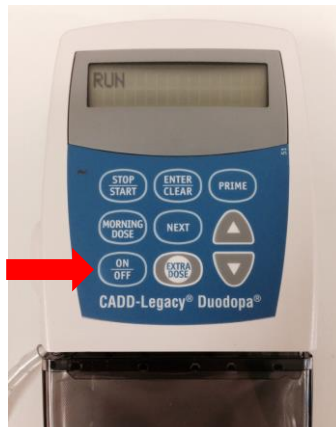


- The pump self-check procedure takes ~ 30 seconds
 - The set values and other settings are shown on the screen and the pump will beep as it moves through the settings
- STOPPED will then appear in the display
 - Pump is turned ON, but is not administering Duodopa (Pump is ON but is in the STOPPED position)



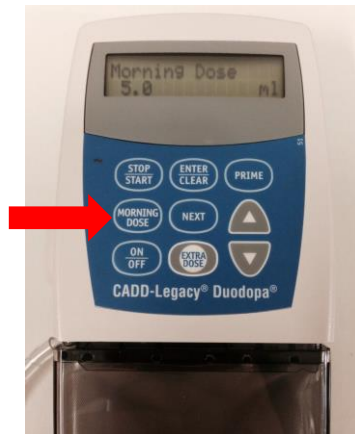
Start the Infusion

1. Press and hold the STOP\START button for 3 seconds
- The self-check procedures will take 15 seconds
 - Set values are shown and corresponding beeps will be heard for each value
 - RUN appears in the display
 - Pump is running and administering a continuous infusion of Duodopa



Administering the Morning Dose

1. The pump has to be in the RUN position in order to give the Morning Dose. Once the morning dose is given the pump automatically starts the continuous dose.
2. Press the MORNING DOSE button **twice**, to administer the morning dose. The continuous dose will follow automatically. You will see the dose count down in the display and you will hear the pump cycle.
 - The morning dose will be locked out for 20 hours- you will not be able to access the morning dose again for 20 hours.



The Pump MUST always be secured in a carrying case!



Administering an Extra Dose

1. The pump has to be in the RUN position in order to administer an extra dose
2. Press the EXTRA DOSE button **once** to administer the extra dose. The continuous dose will follow automatically. The screen will display the word “Dose” when the extra dose is being delivered
 - The extra dose will be locked out for 1 hour- you will not be able to access the extra dose for 1 hour. If you are using more than 5 extra doses a day please contact the Movement Disorders Clinic

