

ADMISSION

Please report to Admitting Office on arrival.

PER DIEM CHARGE

Responsibility of Payment form signed on admission, payable on receipt of statement. Charge can be paid in person, by mail, or Deer Lodge Centre Deposit Box at the Security Office.

MONEY

We request that no more than \$10.00 is left on the Unit. This money may be used for clothing or special events. Gift Shop, Barber Shop and newspaper stands are located on Main Street.

MEALS

Meals are served on the unit. Cafeteria services are available. Please inquire at the nursing desk if you wish to use this service. The clinical dietitian can be consulted if required.

MEDICATIONS

Medications are provided by Deer Lodge Centre, with some exceptions. Please bring all your medications with you and ensure you have sufficient quantities for the entire stay. Your medications will be returned to you at time of discharge if not required during your stay.

FOOTWEAR

Please bring two pairs of well-fitting shoes with good grips for safe walking.

TOILETRIES

Please bring: Brush/comb, razor, deodorant, facial tissue, toothbrush, toothpaste, nail clippers etc.. Personal brief products will be provided if necessary.

CLOTHING

Each resident requires sufficient machine washable clothing for 3 days: shirts, trousers, dresses, socks/hosiery, underwear and pyjamas. All clothing will be labelled on admission. Laundry Services are available every 2nd day. On re-admission, it is recommended to bring clothing items that have been previously labelled at DLC. Please send a laundry bag if family wish to launder clothes.

AIDS

Please bring all necessary aids, e.g. walker, wheelchair, glasses, hearing aide.

VALUABLES

Please leave all valuables at home. Deer Lodge Centre does not assume responsibility for lost items.

SPIRITUAL CARE

Worship services on request. Worship services are scheduled and you are welcome to attend.

RECREATION

You are welcome to attend all recreation events on the unit. If you are interested in other activities, a recreational worker may be able to help you attend

Tower: (204) 831-2195

Social Work Office: (204) 831-2568

March 15, 2012

PERSONAL CARE RESPIRE PROGRAM

Deer Lodge Centre



DEER LODGE CENTRE

Making lives better

PURPOSE OF RESPITE



The Respite Care Program on Tower 4 offers short-term admissions to Deer Lodge Centre for the purpose of providing a period of relief to families who care for a dependent person on 24-hour basis.

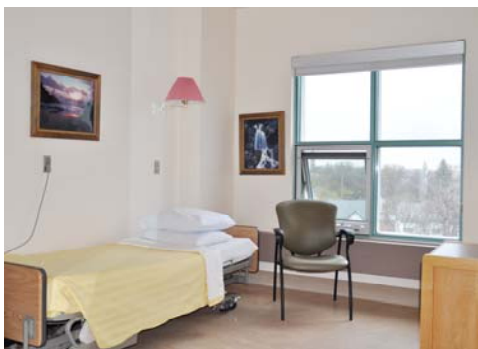
The staff of Deer Lodge Centre welcomes you to our facility. You and your family are welcome to visit at any time. However, we encourage you to enjoy your respite.

The day-to-day medical treatment needs will be addressed by Deer Lodge Centre physicians. If you have a Health Care Directive please bring it with you on admission day. If you will be attending an outside medical/treatment appointment while in respite Tower 4 will provide a Transfer Sheet, for communication purpose. In the event of an emergency, the client will be transferred to an appropriate health care facility and you will be notified immediately.

Upon admission we request that you be prepared to assist in settling your family member and providing staff with the required information. The Nurse or Social Worker will discuss the Winnipeg Regional Health Authority Advance Care Plan at the time of admission.

We may collect, record, store, use or disclose personal health information in compliance with Manitoba's Personal Health Information Act. If you would like to know more about your rights under this Act, ask the staff who are caring for you or Deer Lodge Centre Privacy Officer at (204) 831-2164.

Prior to admission you may want to contact the Unit Manager or Social Worker, should you have any questions or concerns. You are also encouraged to contact the Social Work Office to arrange a tour of the unit and facility for first time respite.



ADMISSION DAY: WEDNESDAY

On admission day we ask that you arrive between 10:00 am and 11:00 am. If you require assistance during the admission process, please inform the unit clerk. Please have a responsible individual with you who can provide any up to date medical information.



DISCHARGE DAY: TUESDAY

Discharge time is between 10:00 am and 11:00 am.

TELEVISION

A TV is available in your room; however, you are responsible for the cable costs. Please enquire with staff in order to set up this service.

LENGTH OF STAY

Usually two (2) weeks. Transportation to and from Deer Lodge Centre is your responsibility.